



I/CAD 9.4 RELEASE SUMMARY

I/CAD 9.4 SUITE WITH INTERGRAPH ONCALL[®], MOBILE CLIENTS & INTERFACES

PRODUCT OVERVIEW & VALUE PROPS

Intergraph[®] Computer-Aided Dispatch (I/CAD) from Hexagon's Safety & Infrastructure division is a suite of industry-leading incident management software that features complete, integrated capabilities for call-handling and dispatching, intelligent mapping, field communications, data reporting and analysis, and application integration. I/CAD enhances the quality and availability of critical information, providing a common operating picture for intelligent response.

VERSION OVERVIEW

This summary covers the December 2018 and March 2019 releases of I/CAD 9.4.

The March 2019 release includes fixes only. The December 2018 release delivered some important enhancements that continue to provide value for current customers without requiring a major release upgrade.

Key features included:

- Cross-product support for geofencing
- Intergraph Mobile for Public Safety working condition improvements
- I/Map Editor support for the latest GeoMedia version
- New fire station dashboard in Intergraph OnCall Dashboard

I/CAD 9.4 CUSTOMER-DRIVEN ENHANCEMENTS

Starting with I/CAD 9.4, we've replaced the maintenance release delivery mechanism with a quarterly cumulative patch release to eliminate costly upgrades and simplify Global Product Center support.

We heavily evaluate cumulative patch releases to minimize software impact, so applying a fix no longer requires an upgrade process. Patch releases can also include select enhancements, which are optional changes that pose no upgrade impact unless selected by the customer.

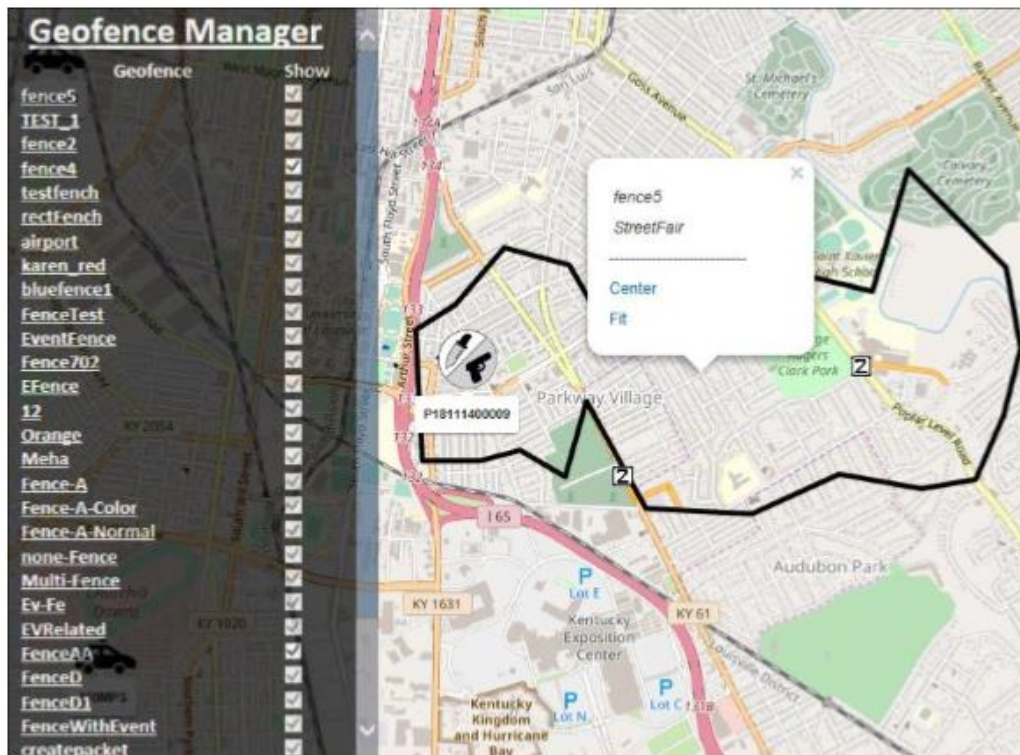
The December 2018 release of the I/CAD suite delivers many new capabilities and enhancements highly requested by customers.

CROSS-PRODUCT SUPPORT FOR GEOFENCING

Geofencing is now available on the 9.4 platform in the following products:

- I/Dispatcher
- I/Calltaker
- I/NetViewer®
- I/NetDispatcher®
- Intergraph Mobile for Public Safety

Available for display in all products, geofences are virtual boundaries used to denote specific areas on a map. Users can create, modify, or remove them only in I/Calltaker and I/Dispatcher. Once created, the software sends notifications when other map elements interact with the geofence perimeter (e.g., when units enter or exit or events are created within the perimeter).



GEOFENCE SUPPORT IN INTERGRAPH MOBILE FOR PUBLIC SAFETY

I/MAP EDITOR SUPPORT FOR LATEST GEOMEDIA VERSION

I/Map Editor now supports the 16.5 version of GeoMedia. With this feature, customers who have upgraded to the latest GeoMedia version can continue using I/Map Editor for their map build workflows.

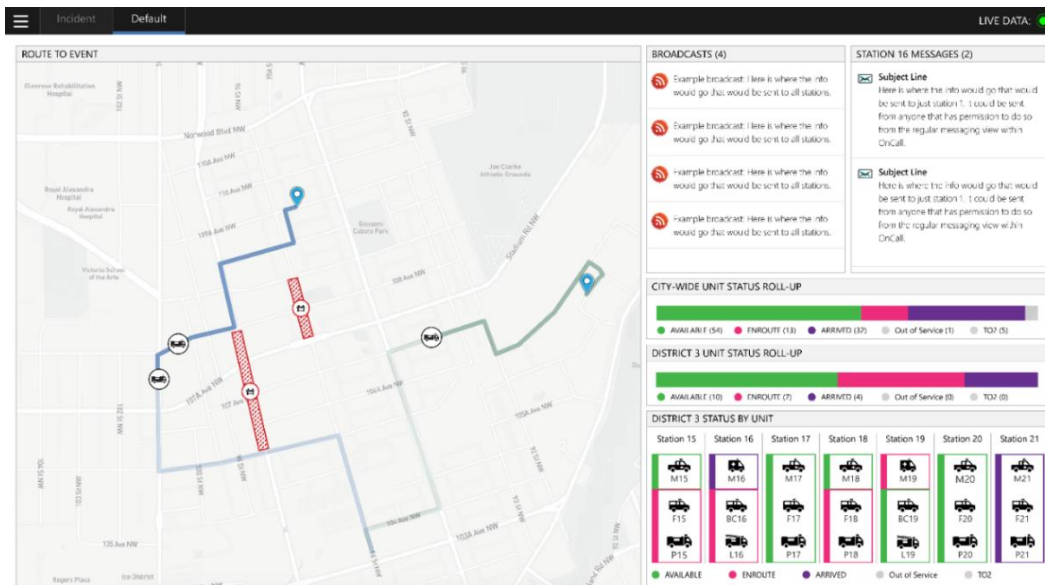
INTEROPERABILITY FRAMEWORK FOR I/CAD

IFCADRMSLINK enhancements deliver ease-of-use and performance improvements when interfacing with Intergraph InPursuit® WebRMS or external records systems.

- Users can now select multiple agencies using the filters tab in the IFCADRMSLink configuration tool. Previously, users had to write scripts to push codes to all agencies.
- IFCADRMSLink now populates the PrimaryEmployeeId value through an option that determines the first unit to arrive on scene. It then uses the unit's defined line-up to determine the primary or first employee.
- We have reduced the time needed to perform an event sync.

INTERGRAPH ONCALL DISPATCHER FOR I/CAD

This release includes a new fire station view for dashboards that enables wall board displays to help improve crew response times.



NEW DASHBOARD PROVIDES A FIRE STATION SPECIFIC VIEW OF DISPATCHED EVENTS

INTERGRAPH MOBILE FOR PUBLIC SAFETY

This release includes the following usability and configuration improvements:

- **Geofence Support** – applies to the multi-map
- **Restrict Comments to Agency** – allows users to set comments as visible only to other users in their agency
- **Primary Unit Command** – assigns a unit as the primary unit for an event
- **Staging Area Location in Status Bar** – lets sites configure whether the location of the staging area associated with the unit's status displays in the status bar
- **Fire Top Icons** – delivers fire “top” bitmap icons by default
- **Intersection Disambiguation** – supports multiple intersections with the same name (e.g., with curved streets that intersect another street more than once, agencies can now include tags with letters, numbers, or both to distinguish them)
- **Disabling GPS Comments in Unit History Reports** – prevents disabling GPS comments from being included in the report
- **Close Dispatch Pop-up** – configures the dispatch pop-up, which displays when a user has been dispatched to an event, to close automatically based on unit status changes

MISCELLANEOUS CUSTOMER-DRIVEN ENHANCEMENTS

- **Banner Add-in** – centers the CAD map on the unit that triggers an emergency message, which allows dispatchers to identify and dispatch other nearby units during an emergency
- **I/Mobile Data Terminal** – omits sensitive information, such as user IDs and passwords from log files with new prohibited log strings parameter
- **Intergraph Mobile Responder[®]** – improves sorting on the unit monitor

See the full release notes for more information.

LICENSING & DISTRIBUTION

The following products require a Reprise license in I/CAD 9.4:



I/CAD 9.4 RELEASE SUMMARY

I/CAD 9.4 SUITE WITH INTERGRAPH ONCALL[®], MOBILE CLIENTS & INTERFACES

- I/Dispatcher
- I/Calltaker
- I/NetViewer
- I/NetDispatcher
- Intergraph Mobile Responder
- Intergraph Mobile for Public Safety
- I/Mobile Data Terminal (I/MDT)
- Intergraph OnCall Dispatcher - Essentials
- I/Page
- I/Informer Server
- I/Tracker
- I/Backup
- I/Map Editor
- I/Map Editor™ for ArcGIS®
- I/CADLink
- Icad_Net (set up license check, not run time)
- I/TDD
- Intergraph OnCall Dashboard
- I/Fire Station Alerting
- I/Push to Talk
- Intergraph Communications Controller
- Map Administration Utility
- I/AutoDispatch Server
- Active Fire Station Printing
- Premier Responder I/CAD Interface
- ProQA Paramount I/CAD Interface
- I/FRMS CADLink
- I/Question and Answer
- I/CADLink
- I/Executive (set up license check, not run time)
- CADDDBM (set up license check, not run time)
- CORE (set up license check, not run time)
- ISM (set up license check, not run time)

ADDITIONAL INFORMATION & RESOURCES

Learn more about I/CAD, mobile, and interface products on the following sites:

SUPPORT SITE

- [Computer-Aided Dispatch \(CAD\) Suite](#)
- [Computer-Aided Dispatch Interfaces \(CAD-INF\)](#)



- [Public Safety Mobile Computing Suite](#)
- [Public Safety Mobile Responder](#)

EXTERNAL SITE

- [Intergraph Computer-Aided Dispatch](#)

Additional licensing resources are available on the [licensing resources page](#).